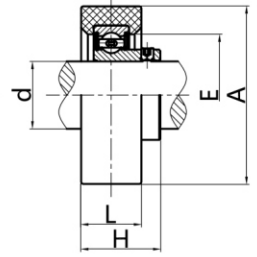
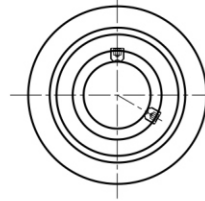
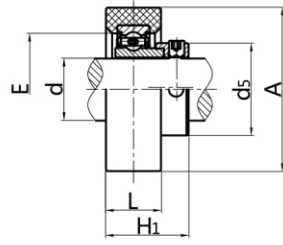
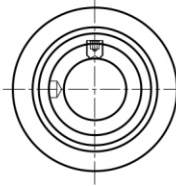


FJ-CSARC2

FJ-CSBRC2



Unit NO.	Dimensions (mm / in.)						Bearing No.	Rubber Ring NO.	Weight (kg)
	d	A	L	E	H1	d5			
FJ-CSARC201	12	64.3	25.4	34.9	34.9	28.6	FJ-CSA201	RC-3	0.20
201-8	1/2	2-17/32	1	1-3/8	1-3/8	1-1/8	FJ-CSA201-8		
FJ-CSARC202	15	64.3	25.4	34.9	34.9	28.6	FJ-CSA202	RC-3	0.20
202-10	5/8	2-17/32	1	1-3/8	1-3/8	1-1/8	FJ-CSA202-10		
FJ-CSARC203	17	64.3	25.4	34.9	34.9	28.6	FJ-CSA203	RC-3	0.20
203-11	11/16	2-17/32	1	1-3/8	1-3/8	1-1/8	FJ-CSA203-11		
FJ-CSARC204	20	64.3	25.4	39.7	36.1	33.3	FJ-CSA204	RC-4	0.24
204-12	3/4	2-17/32	1	1-9/16	1-27/64	1-5/16	FJ-CSA204-12		
FJ-CSARC205	25	64.3	25.4	45.2	36.1	38.1	FJ-CSA205	RC-5	0.26
205-14	7/8	2-17/32	1	1-25/32	1-27/64	1-1/2	FJ-CSA205-14		
205-15	15/16						FJ-CSA205-15		
205-16	1						FJ-CSA205-16		
FJ-CSARC206	30	79.0	27.0	54.0	40.2	44.5	FJ-CSA206	RC-6	0.36
206-17	1-1/16	3-7/64	1-1/16	2-1/8	1-37/64	1-3/4	FJ-CSA206-17		
206-18	1-1/8						FJ-CSA206-18		
206-19	1-3/16						FJ-CSA206-19		

Unit NO.	Dimensions (mm / in.)					Bearing No.	Rubber Ring NO.	Weight (kg)
	d	A	L	E	H			
FJ-CSBRC201	12	64.3	25.4	34.9	29	FJ-CSB201	RC-3	0.16
201-8	1/2	2-17/32	1	1-3/8	1-9/64	FJ-CSB201-8		
FJ-CSBRC202	15	64.3	25.4	34.9	29	FJ-CSB202	RC-3	0.16
202-10	5/8	2-17/32	1	1-3/8	1-9/64	FJ-CSB202-10		
FJ-CSBRC203	17	64.3	25.4	34.9	29	FJ-CSB203	RC-3	0.16
203-11	11/16	2-17/32	1	1-3/8	1-9/64	FJ-CSB203-11		
FJ-CSBRC204	20	64.3	25.4	39.7	31	FJ-CSB204	RC-4	0.22
204-12	3/4	2-17/32	1	1-9/16	1-7/32	FJ-CSB204-12		
FJ-CSBRC205	25	64.3	25.4	45.2	32.5	FJ-CSB205	RC-5	0.24
205-14	7/8	2-17/32	1	1-25/32	1-9/32	FJ-CSB205-14		
205-15	15/16					FJ-CSB205-15		
205-16	1					FJ-CSB205-16		
FJ-CSBRC206	30	79.0	27.0	54.0	35.5	FJ-CSB206	RC-6	0.32
206-17	1-1/16	3-7/64	1-1/16	2-1/8	1-13/32	FJ-CSB206-17		
206-18	1-1/8					FJ-CSB206-18		
206-19	1-3/16					FJ-CSB206-19		